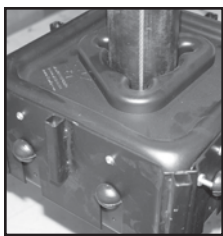


Attach your gourd Rack Now



EZPTP



5A. Run the non-hooked end of cable up through the Fountain Rack (which should be on the lower part of the EasyLift Pole). Continue with the cable over the pulley wheel in the EasyLift Pulley, and down through a different opening of the Fountain Rack. Pull the cable through until the hooked end of cable is touching the hanging block.

For the FR8, MHR, MGR12 Using S&K RP19 , ExRP19 Poles or SP2

BE SURE TO HAVE THE CABLE GO STRAIGHT UP THE POLE - DO NOT ALLOW IT TO WRAP AROUND THE POLE!



5B. When using the RP19, EXRP19, or the SP2 with a winch you must use the appropriate Adapter Topper for each pole. The A2 is for the SP2 and the A19 is for the RP19 & EXRP19. These Adapters enable the EZPTP topper and a 4-inch pulley to be used providing easy lifting and lowering of your gourd rack(s). When assembling the A2, slide the adapter over the pole, align the holes in the SP2 and the A2 and insert the bolt and tighten (bolt included), now slide the EZPTP topper in the A2. When assembling the A19, slide the adapter over the RP19/EXRP19 Top Section insert the EZPTP topper, making sure the topper is resting on the RP19/EXRP19 top Section and the A19 is snug against the EZPTP screw in the set screw (set screw included).

Now put pulley topper on top of the straight pole. This may require removing the top two sections of a previously installed S&K Pole. Run the non-hooked end of the cable over the pulley and pull through. Next take the same end of the cable through the rack you are hanging. Attach the Cables Hook to the Lift Panel on the rack.

6. After running the non-hooked cable up and through the Pulley and the product being supported on the pole, take the non-hook end of the cable and run it into the winch as shown. (Note: The cable goes behind the two bars above the winch's spindle, as shown.)

7. Restring cable by first pulling the cable through a sidewall opening until the black mark (made in Step 4) is at the opening. This will give the correct amount of cable to secure it to the winch.

8. Restring cable by "walking" it around the four openings in the sidewall of the winch spindle. Loop it in and out of the four openings until it ends up with a small length of cable OUTSIDE the winch wall.

9. While keeping the cable taught, begin winding the cable onto the winch with the crank. As the cable tightens, the product on the pole will move upward. When it is in place, slip the "lock" on the left of the winch in place.

S&K Manufacturing, Inc.
1001 Liberty Industrial Drive
O'Fallon, MO 63366



www.skmfg.com
1-800-764-8688