

INSTRUCTIONS FOR INSTALLING YOUR NEW EZLift 2 3/8" POLE (EZL238) with a WINCH

Revised 091911v1

WARNING: FOR YOUR SAFETY, DO NOT ERECT POLE NEAR ELECTRICAL WIRES IN THE AIR OR UNDER THE GROUND OR NEAR LARGE TREES.

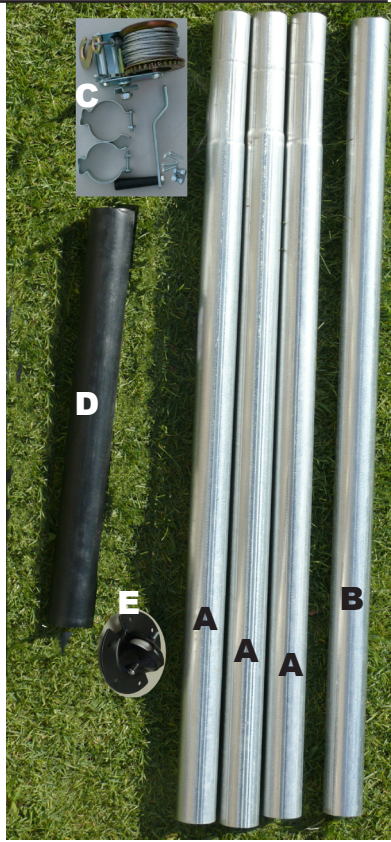
ITEMS INCLUDED IN THIS PACKAGE:

EZL238 with a Winch Contents:

- A:** 3 - Swedge Pole Sections
- B:** 1 - Top (*Non Swedge*) Pole Section
- C:** 1 - Winch Kit
 - 1 - 600 lb Winch with cable
 - 2 - Pole clamps with Nut(s) & Bolt(s)
 - 4 - Self Tapping Screws
 - 1 - Winch Handle
- D:** 1 - Plastic Ground Sleeve
- E:** 1 - Ultimate Pulley Topper
 - 1 - Wheel
 - 1 - Nut & Bolt

Read all of the instructions before starting pole assembly.

These instructions will instruct you how to assemble your Easy Lift 2 3/8" Pole (EZL238) with a Winch.



S&K Manufacturing, Inc.

1001 Liberty Industrial Dr.
O'Fallon, Missouri 63366
www.skmfg.com
1-800-764-8688

Make your pole taller. Additional pole sections can be purchased by calling S&K at 1-800-764-8688.

Gourd Racks Approved for the EZLift 2 3/8" Pole:

- Multi Gourd Rack 12 (MGR12)
- Multi House Rack (MHR)
- Fountain Rack 8 (FR8)
- Ultimate Gourd Rack (UGR)
- Fountain Rack 238 (FR238)

STEP 1:

Determine a site to assemble the pole. Keep pole approximately 30 to 40-feet away from trees, power lines both above and below ground, and other obstructions.

STEP 2:

After a safe location has been determined for raising your EZL238 Pole, dig a hole approximately 22-inches deep and 12-inches in diameter. Create a 2-inch platform of concrete at the base of the hole. Let set for 1-hour. If using an S&K ground sleeve, place the ground sleeve in the center of the concrete platform and then insert one of the swedge pole sections into the ground sleeve. **MAKE SURE SWEDGE END OF POLE IS POINTING UP.** If no ground sleeve is being used, place one of the swedge pole sections in the middle of concrete platform and set plumb. **MAKE SURE SWEDGE END OF POLE IS POINTING UP.** Using one bag of 80lbs Concrete Mix, following the instructions on the concrete mix container. Pour concrete mix into the hole. **DO NOT POUR CONCRETE MIX INTO THE CENTER OF GROUND SLEEVE OR POLE.** Make sure pole is perfectly vertical/plumb before concrete mix is left to set and dry. Let concrete mix set for 24 hours before proceeding to step 3.

STEP 3:

After the concrete mix has set for at least 24-hours, insert another swedge pole section onto the top of the section already plumb from step 2.

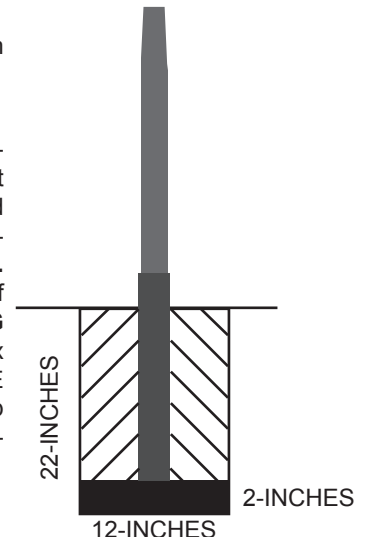
****MAKE SURE SWEDGE END OF POLE IS POINTING UP**

STEP 4:

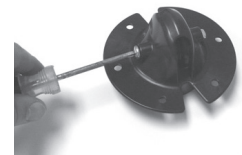
Slide your Gourd Rack over the 2 pole sections installed from Step 2 & 3. Refer to your Gourd Rack instructions.

STEP 5:

Assemble the pulley topper by pushing the provided bolt through the topper and pulley wheel. Screw the bolt into the accompanying nut until bolt is firmly hand-tightened.

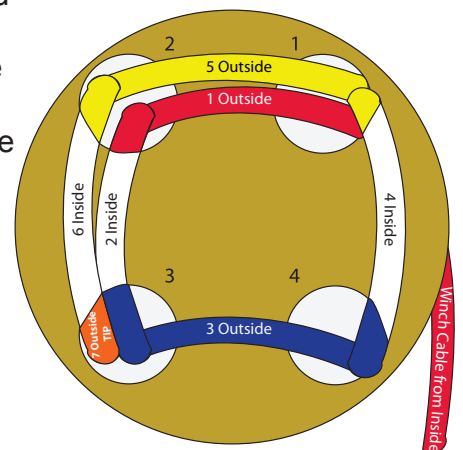
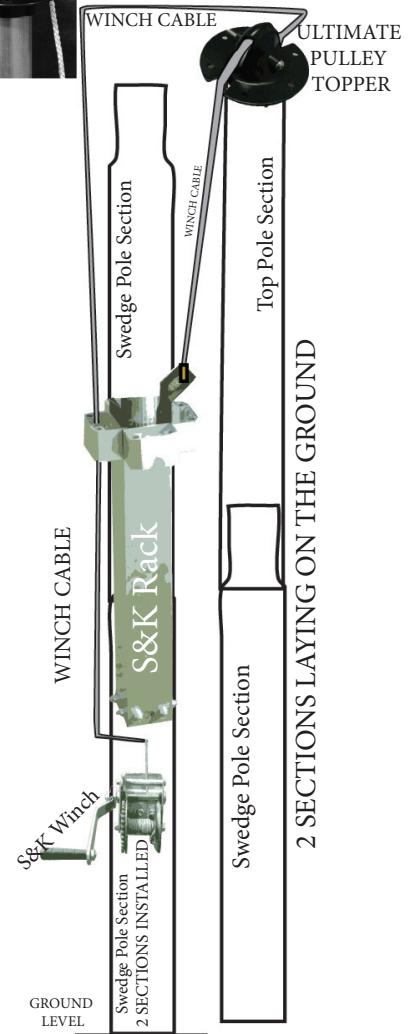
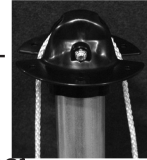
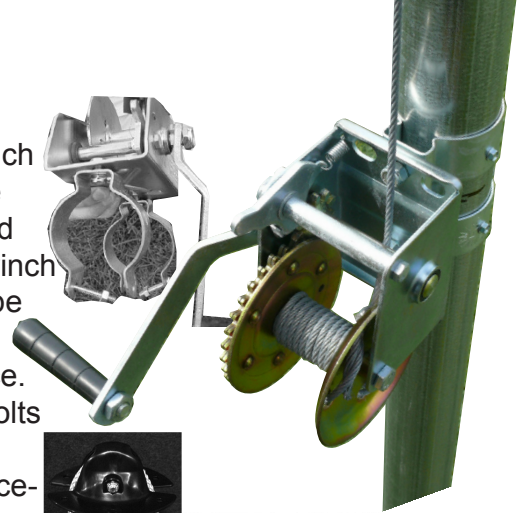


After Step 4



STEP 5: Winch Assembly

- A. Unlock the Brake on the winch. Unwind the cable from the winch spindle to it's entire length. Before removing the cable from the side wall of the winch, take note how the cable is being secured and make a reference mark on the cable on the inside of the winch (approx. 12.5" from end of cable) with a permanent marker to be used later in assembly.
- B. Mount the included handle onto the winch and tighten into place.
- C. Attach each pole clamp onto the back of the winch using the bolts and locknuts that are included in the package.
- D. Mount the assembled winch onto the pole. When choosing placement of the winch, select a location that is not too high or too low on the pole. The location of the winch on the pole will be a direct result of where you want your S&K rack when performing your nest check (usually 2 to 4 feet from the ground).
- E. Once the Winch is mounted on the pole, Drill an 1/8" hole on each side of the clamps and into the pole. Once all four (4) of the holes have been drilled, screw the provided metal screws through both sides of each clamp. This will anchor the winch onto the pole and prevent vertical dispositioning during use.
- F. Locate the cable for the winch and feed the 'bitter end' (non hook end) of the cable up through the S&K Rack. (S&K Rack should be resting on the ground over the two (2) pole sections (installed in Step 2) Continue feeding the cable over the pulley wheel and back down through the opposite side of the S&K Rack until the hooked end of the cable is able to be connected to the Lifting Panel on the S&K Rack. Attach hook to lifting panel.
- G. Mount the Ultimate pulley topper on top of the straight pole section and connect the straight pole section to the swedge section. After the cable has been fed through pulley and every product that is to be supported on the pole, with a second person and a step ladder, carefully lift the pole sections laying on the ground and place them on top of the already standing-plumb pole sections. While the pole sections are joining together, one person should attend to the winch cable insuring that it does not kink.
- H. Feed the cable's bitter end to the winch. The cable will be fed behind the two bars.
- I. To reattach the cable to the winch, pull the cable through the side-wall opening until the reference mark (you previously made in Step Five A.) is at the opening (approximately 12.5" from the bitter end of the cable).
- J. Restraining the cable by "walking" it around the four openings in the sidewall of the winch spindle. Loop the cable in and out until you end up with a small length of cable OUTSIDE the winch wall (See example to the right).
- K. While keeping the cable taut, begin cranking the handle to wind the cable back onto the winch spindle. As the cable tightens, the rack will begin to rise. When it is in place, simply slip the winch lock into position. The winch lock is found on the left side of the winch.



SAFETY TIPS:

When high winds are expected:

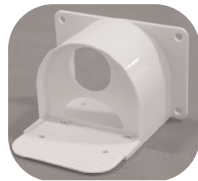
Lower the contents on your pole. This will help protect your pole and all products being used on your EZL238 pole. You will also be protecting your Purple Martins.

Plan ahead:

Before erecting your pole, be sure you are clear of any power lines both above and below ground. Also make sure you are approximately 30 - 40-feet away from tall trees or other obstructions.

Pole is not warranted against high winds, weather and acts of God.

If Items are missing from this package, do not return it to the store. Call S&K at 1-800-764-8688



UTRS

UTC



Ultimate Tunnel
Only

\$3.97 ea

