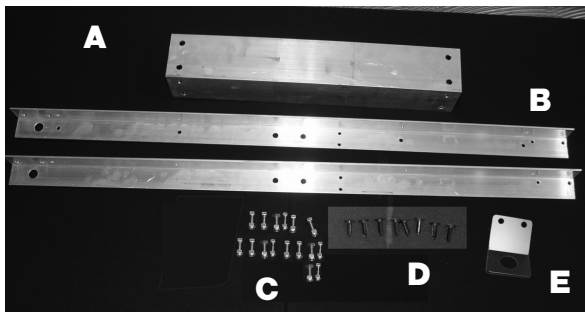


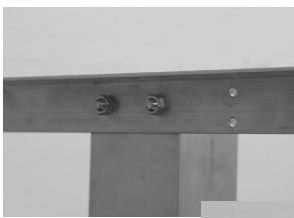
INSTRUCTIONS

MHR

Multi House Rack

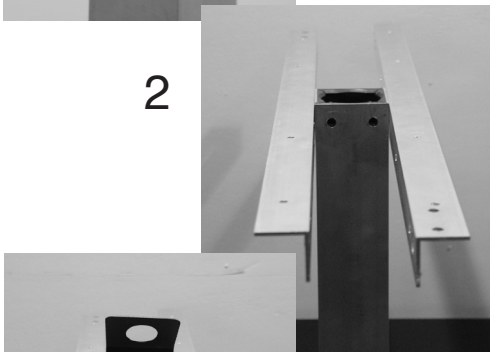


- A. - Slide Base (with 8 interior sliders)
- B. 2 - Aluminum Angle 1 1/2" x .125 wall 36" long - 6 Holes
- C. 16 - Bolt and Lock Nut sets
- D. 8 - Black Snaps
- E. Hanging Bracket



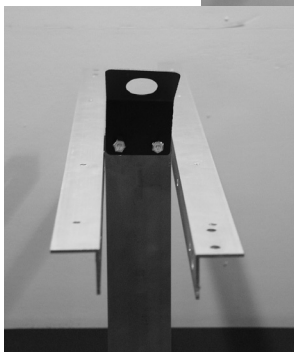
1

Attach one (B) Aluminum Angle (1 1/2" x .125 wall 36" long) to each side of the (A) Slide Base with (C) Bolt and Lock Nut Sets. The bolts should face **OUTWARD** from the Slide Base - which means the lock nuts go on the **OUTSIDE** of the Slide Base and Aluminum Angle. (See photos 1 and 2)



2

Insert two bolts through the two openings shown in Photo 2, and tighten lock nut on the **OUTSIDE** of Sliding Block - to keep the interior plastic slider in place.



3

Attach the Hanging Bracket (E) to the Slide Base as shown in Photo 3. Tighten the lock nuts on the **OUTSIDE** of the Sliding Base and Hanging Bracket.

The remaining 5/16 screws and bolts go into the top and bottom of the Slide Base - they hold the interior plastic slider in place. Note: The screws should face outward from the Slide Base.



4

Place the Slide Base over the 1.9" round pole, 2" round Pole or 2" Square Pole. Place S&K House on each side of the Aluminum Angle (1 1/2" x .125 wall 36" long). Secure MHR with a rope or cable and move up and down the pole. Set the houses on the MHR. Photo 4.



4

Insert four black snaps (D) through the floor of each house and into the holes in the top of the Aluminum Angle (1 1/2" x .125 wall 36" long). You may need to drill corresponding holes in the bottom house floor for the Snaps to go through into the holes of the hanging arms. The "threads" of the Snaps must face downward. (See photo 5)