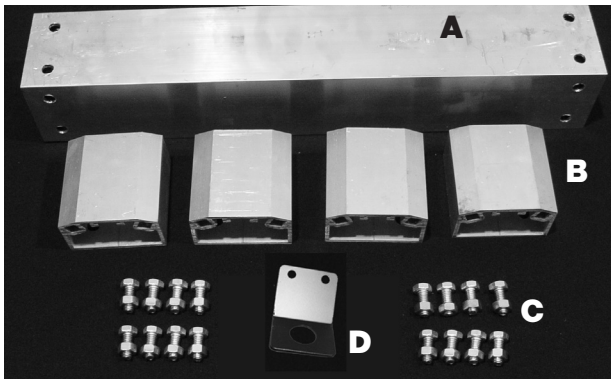


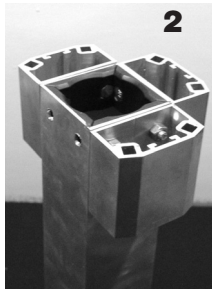
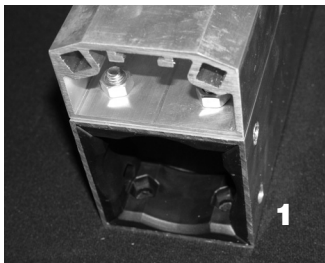
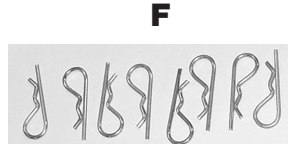
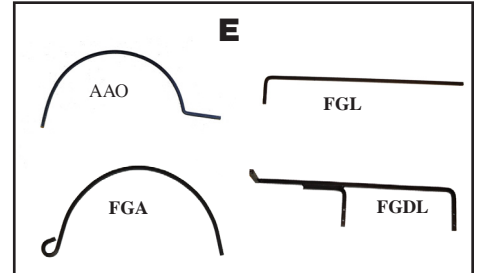
# INSTRUCTIONS

FR8

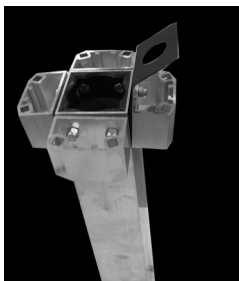
## Fountain Rack 8



- A. Slide Base (with eight interior sliders)
- B. 4 - Arc Base 3" Long
- C. 16 - Bolts (5/16 -#18 3/4) and Lock Nuts (5/16 -#18)
- D. - Lift Panel
- E. Arms (your choice)
- F. Hitch Pins

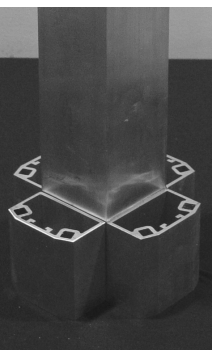
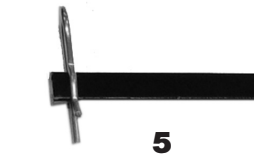


1. Attach one (B) Arc Base to three sides of the (A) Slide Base with (C) Bolt and Lock Nut Sets. The bolts should face **OUTWARD** from the Slide Base - which means the lock nuts go on the **OUTSIDE** of the Slide Base. (See photos 1 and 2) Note interior sliders are in place inside the Slide Base (shown in photo 1)



2. Attach the Lift Panel (D) on one side of the Slide Base along with the fourth Arc Base. The Lift Panel should be between the Arc Base and Slide Base - as shown in photo 3. Be sure to have the bolts facing **OUTWARD**. Tighten the Lift Panel in place.

3. The remaining six 5/16 screws and bolts go into the bottom of the Slide Base - they hold the interior plastic sliders in place. Note: The screws should face outward from the Slide Base.

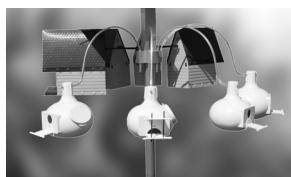


4. Place the Slide Base over the 1.9" Round Pole, 2-3/8" Round Pole or 2" Square Pole. Secure completed FR8 with a rope or cable to the Lift Panel.

5. Insert the Arms (your choice) into the Arc Base of the Fountain Rack 8. See photo 4.

6. Place Hitch Pins on end of Arms to secure your gourd, feeder or other item to be held on the Fountain Rack 8. See photo 5.

5. **EXPANDING:** To add eight more arms to your FR8, you need an expansion kit Fountain Rack 8 (EKFR8) which includes 4 Arc Bases and 8 Arms of your choice. See photo 6.



S&K Manufacturing, Inc.  
1001 Liberty Industrial Drive  
O'Fallon, MO 63366  
www.skmfg.com • 1-800-764-8688