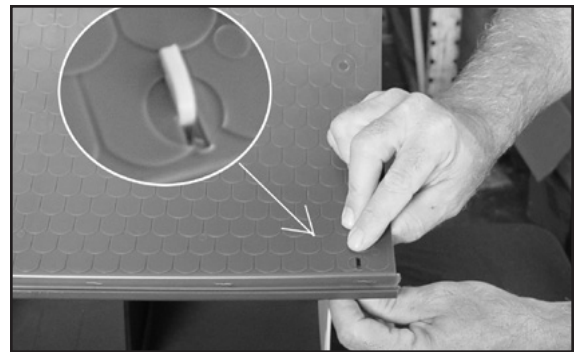


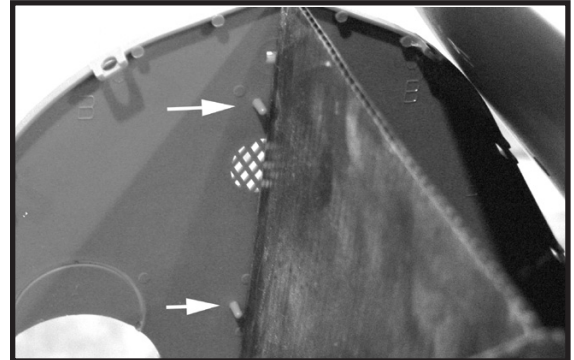
Step 16: Six snaps go into each side of the barn. Be sure to push the snaps in all the way.

The snaps cannot be removed without being cut off. Be sure they are lined up!

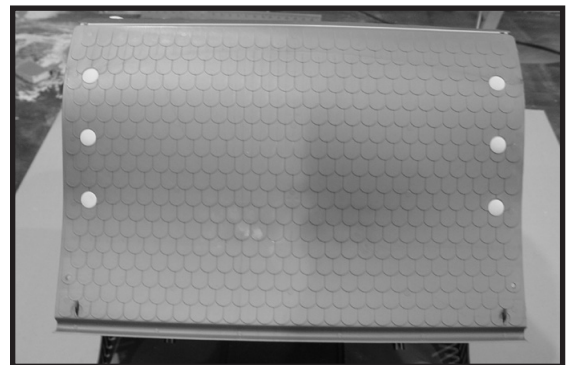
Push snaps in on both side walls.



Step 17: Set the barn upright. Take the roof and place it over the house. At each corner of the roof, you will find an alignment hole that corresponds with a slide tab. Push the small tab through the pre-cut hole at each corner and slide into place. (Note the photo inset)



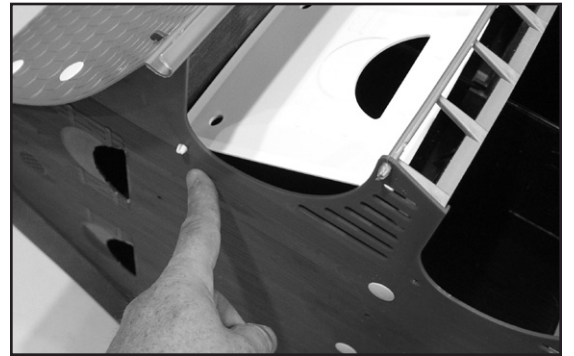
Step 18: Before completely attaching roof, check that the attic wall dividers are placed between the tabs on the side of barn's sides.



Step 19: Starting at the roof peak, place snaps down each side of the roof to the eave. Line up roof holes with the snap holes in the sides. Insert antennas and perches. (See step HN D)

NOTE: If you wish to have **ROUND ENTRANCES** instead of **Starling Resistant (SREH) crescent shaped holes**, see **"Trimming Entrances Holes"** in the House Notes section **Only use round hole entrances where starlings are not present.**

Step 20: The four door panels are attached by inserting the end tabs through the pre-drilled holes of the side panel as shown. The door panel will swing down. Press the bottom of each door panel until they snap into place.



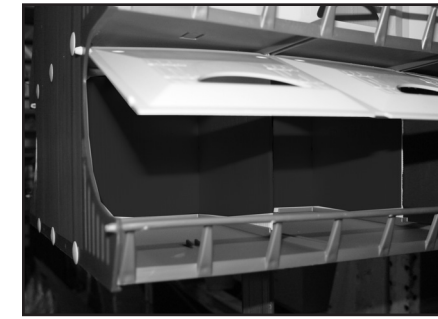
What's the difference with entrances? A round hole entrance will provide a path of least resistance. It's good when wanting to attract martins where starlings are not present. The SREH or Starling Resistant Entrance Holes (crescent shaped) provides your martins the best protection from other birds taking over the nest. If you need "Door Plugs" to close either opening, contact S&K at 1-800-764-8688.

www.skmfg.com
1-800-764-8688

House Notes - Additional Information

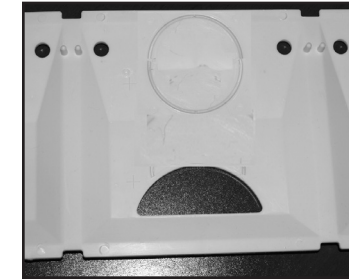


HN A: The S&K Tri-Tel, Quad-Tel Pole or adapter (sold separately) will insert into the bottom of the barn and snap into place. The third snap from the top of the pole is for different applications.



HN B: TO CLEAN AND INSPECT

To gain access to the inside of the 16 Family Barn, the doors swing up and down. When closing doors, be sure they snap into place at the bottom. To open, press down near the bottom middle and pull the bottom of the door upward. It swings up.



HN C: TIMMING ENTRANCE HOLES

Trim along the circular indentation found on the back of the doors, just above the crescent-shaped hole.

Door plugs - round or crescent shaped - can be purchased directly from S&K Manufacturing at 1-800-764-8688, or visit www.skmfg.com



HN D: ADDING PERCHES

Perches have been included with your 16 Family Purple Martin Barn. Insert the perches on the side until they snap into place.

Insert the two "antenna" perches at the end of the roof, as shown. They will snap into place.

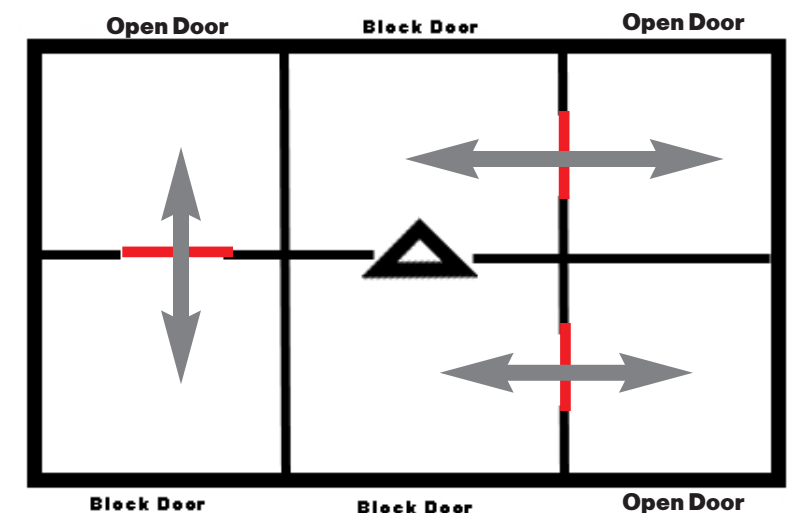
HN E: MAINTENANCE TIPS: The houses can be painted with Fusion® paint to change the color of the house. For easy cleaning of the roof, apply RainX® or Armor All®. This allows the rain to rinse the roof, easily.

TO CLEAN THE ATTIC AREA: Lift the top door, pull down the attic floor at the outer corners and scoop out litter/nesting material. Repeat on all four corners until clean.

HN F:

CREATING LARGER COMPARTMENTS:

Here's a floor plan for creating THREE 6x12-inch compartments on the bottom floor of your purple martin barn. Simply take out the wall tabs (shown in red) and block off a few entrances. S&K has the needed door plugs for this project. This will double the living space for a martin family. Reverse the diagram for the second floor.



Purple Martin Basics

You and many others today share your love of the martin with many past generations of people who have lived on this continent. S&K Manufacturing has the latest in technology and innovation in purple martin housing. We want to improve your chances of attracting this magnificent bird, with some background on purple martins and their present day requirements.

HISTORY: The purple martin's association with man goes back many years to the days when Native Americans hung gourds out for them. People later started erecting multi-compartment units in hopes of attracting this wonderful bird, and eventually martin houses made of other materials and plastic gourds began to be manufactured. Over the years martins in the entire section of the United States east of the Rocky Mountains have become totally dependent on man for nesting sites. Since the fate of these beautiful birds is now in our hands, it is extremely important that we provide adequate housing in which they can raise their young, and also that we can properly manage it.

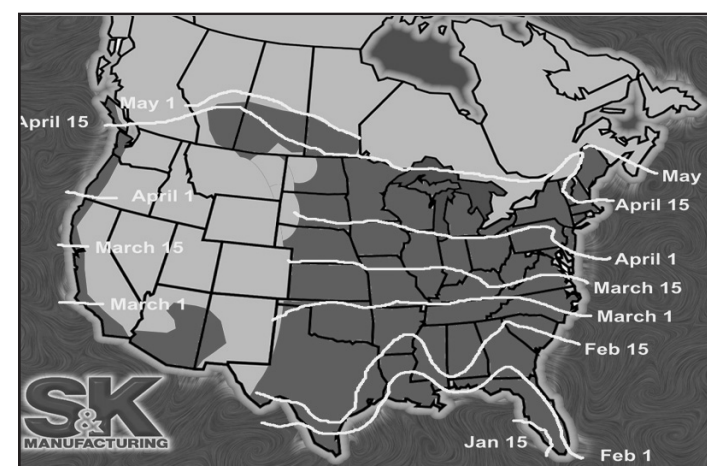
Purple Martins migrate from the Amazon Valley in Brazil northward to North America. This means primarily all the states east of the Rock Mountain Chain, approximately 37 states and parts of the 6 Canadian provinces. Migrating up to 7,000 miles (see Map).

Please refer to the purple martin map to see when purple martins will be migrating to your area.

Migration Time Table: 5 months in the nesting Area, 3 months in Brazil, and 4 months in migration.

LOCATING HOUSING: Often people with good intentions purchase a martin house or gourds, wanting to attract this bird, but they aren't adequately prepared to be responsible landlords. You should be aware of some facts to better your chances of being successful. One important piece of knowledge is that the martin has natural predators, such as owls, hawks, snakes, and raccoons; predator guards can be obtained for use on the housing to help prevent them from killing the martins. You should also erect your housing in the most open area available. Martins will not inhabit a house placed under a tree because of the threat of owls, hawks, and other possible predators. It is recommended that the housing be at least 40-60 feet from any trees taller than the housing. Martins feel a sense of protection being close to people, so place your housing close to human dwellings in a place that offers adequate open area with enough room and time for them to be able to flee when they see aerial predators.

KEEPING YOUR COLONY: What can you as a martin landlord do to prevent this destruction from occurring at your martin colony? The key to getting and keeping a successful martin colony is to manage it properly.



Since we at S&K Manufacturing, Inc. are concerned about the future of the purple martin, we have designed our new line of housing to help you successfully manage a martin colony. Our sturdy poles allow for lowering of the housing and therefore easy inspection to monitor the progress of each martin family and ensure that all is going well. The newly enlarged compartments in the house and larger size of the gourds promote better breeding success of the martins; they tend to raise more babies when provided with roomier nesting cavities. In addition to the improvements already mentioned, another new feature is the crescent-shaped entrance holes that keep out virtually all starlings. In very rare instances, a starling that is smaller than normal might be able to enter the cavities; however, this is by far the exception. Although the entrance holes will prevent all or mostly all starlings from entering the cavities meant for martins, they will not deter house sparrows; this is because of the smaller size of these birds. A responsible martin colony manager, however, can and should be vigilant about keeping them out of the housing. No bird except purple martins should be allowed in the martin house/gourds. Martins, in all likelihood, will not nest in housing in which another species has already established its territory; the martins will be chased off by the other birds. If you notice any birds other than martins trying to lay claim to the housing, plug up the holes if you don't yet have martins and force the birds to go elsewhere. If they are native birds like Bluebirds and Tree Swallows, put up separate housing for them. But you should never allow house sparrows or starlings to get started building nests in houses or gourds that are much needed by the purple martin, whose population has dwindled in the past century. Law protects the purple martin, being native to this continent, but not the English house sparrow and European starling. Most people just simply are not aware of what damage these two non-native species are doing to our native cavity-nesting birds and ecosystem.

A FINAL THOUGHT: As you can see by now, there is more to being a successful martin landlord than merely buying a house and/or gourds, putting them up and letting nature take its course. Your interest in Purple Martins already demonstrates your desire to attract purple martins. We have provided you with the latest in housing design and web site links to help you accomplish your goal of having a healthy and thriving purple martin colony that will last for years. It is our recommendation that your next step be to use available resources such as the internet or recent editions of books on this bird. Knowledge goes a long way toward attracting purple martins and having them return to your location year after year. Reading about them and sharing your hobby with others will tremendously help the purple martin in its fight for survival. Our best wishes in your endeavors, S&K Manufacturing, Inc.

A GREAT SOURCE OF INFORMATION: Join the Song Birds Family Forum. Visit and Join <http://www.songbirdsfamily.com> Today! You can communicate and be in the loop with what's going on in your club, hobby, business, etc.. Even from across the country or world. It is easy and quick to share your ideas, your pictures, and information that are important to you. Remember you can create a calendar of nest checks, bird watching events and other important occasions. This is a FREE Membership which is completely paid for by S&K Manufacturing, Inc.