

# INSTRUCTIONS

BBG



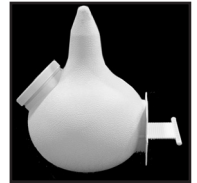
082007v2

## Big Bo Gourd

### PARTS LIST

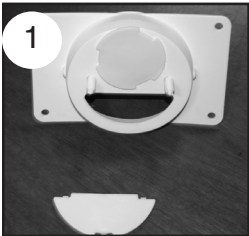
One Big Bo Gourd  
One Gourd Entrance  
Two Porches with Perches

Two Door Plugs (1 round, 1 crescent SREH)  
Two White Snaps  
One Cleaning Cover Cap

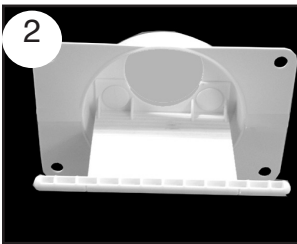


**READ INSTRUCTIONS COMPLETELY BEFORE STARTING TO ASSEMBLE PORCH UNIT.**

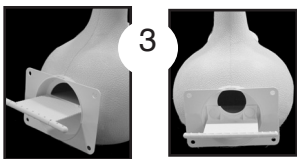
**Note:** The Big Bo Gourd has two types of martin entrances. The ROUND entrance is for first attracting Purple Martins. After Purple Martins have established a nest inside the Big Bo Gourd, use the crescent Starling Resistant Entrance Hole (SREH) to help protect the Martin family and eggs.



1. Install BOTH door plugs on the back of the gourd entrances (see figure 1).



2. Place the porch on the outside of the entrance and line up. **IMPORTANT!** The curved cut-out of the PORCH MUST line up with the ROUND hole of the gourd entrance (as in figure 2). It should look exactly as shown. Once the white snaps are inserted they CANNOT be removed.

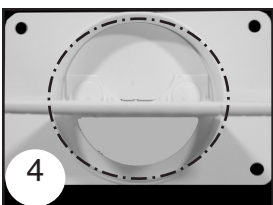


3. When aligned as described above, push the snaps through to secure the porch to the gourd entrance. Connect the second porch to the opposite side using the protruding white snaps.

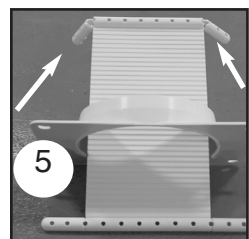
Remove the door plug for the entrance you want open.

SREH Entrance      Round Entrance

4. The entry openings should always be at the top when inserting this unit into the Big Bo Gourd. (Figures 3)



*If you do not plan to use the Ultimate Tunnel/Plate Entrance with your gourd entrance, you may elect to remove the flat flange. (See Photo 4). S&K suggests you leave the entrance as is until you're absolutely sure you want it removed.*



5. Snap off perches that will go inside of gourd at the "break points." (see photo 5b) This will allow the porch to be inserted in gourd. Insert completed Gourd Entrance into your Big Bo Gourd and hang the unit about 12 to 15 feet above the ground and approximately 40 feet away from trees. Poles and gourd racks are available from S&K.



### WHY TWO ENTRANCES?

Purple Martins have a natural enemy - the Starling. Starlings invade the nests of Purple Martins and destroy eggs. They do not eat the eggs, but are just destructive by nature. The crescent-shaped SREH entrance thwarts Starlings - it's the perfect size for Martins, but is too small for the destructive Starlings.

BIG BO GOURDS ARE PERFECT FOR HANGING BELOW AN S&K MARTIN HOUSE OR USE THEM WITH A SINGLE GOURD RACK OR DOUBLE GOURD RACK AND AN S&K TRI/QUAD TEL POLE OR YOUR 1-1/4" ROUND POLE

Your new S&K Big Bo Gourd offers the best of both worlds - a round hole for nesting and an SREH for protection.

**CLEANING!** There may be times when you'll need to clean out your Big Bo Gourd. Simply remove the Cleaning Hole Cover Cap on the unit and reach inside to remove unwanted debris. Replace the Cover Cap securely after cleaning.

[www.skmfg.com](http://www.skmfg.com)

**IF ANY ITEM IS DISCOVERED MISSING,  
CALL 1-800-764-8688 · DO NOT RETURN TO STORE.**